

**PsiLoc Crystal  
Greek on EPOC  
Localisation Package**  
for  
Nokia 9210/9290 Communicator

PSI NT (PSILoc)  
<http://www.psiloc.com/>

Installation Guide

## Installation

Before installing this version of **PsiLoc Crystal Greek on EPOC** package you have to uninstall any previous versions installed in your machine (if any). In order to uninstall previous version go to **Control Panel** and run **Crystal Localisation** applet. Then disable the localisation by selecting **No** in **Enable** setting. Now restart your system (by either Task Manager's software reset or by removing the battery) for the changes to take effect.

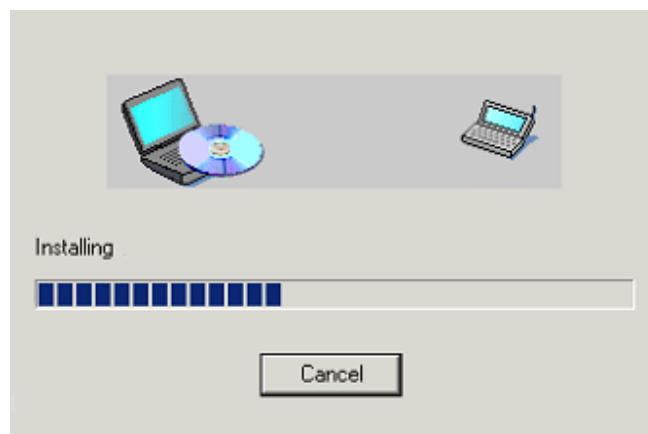
When the system starts go to **Control Panel** and launch **Install/Remove** application, select **PsiLoc Crystal** from the list of installed applications and press **Remove** button.

Now you can install the newest version. **PsiLoc Crystal Greek on EPOC** package is delivered in form of standard SIS installation file. You have to perform the installation process of this file according to your Nokia Communicator User Manual:

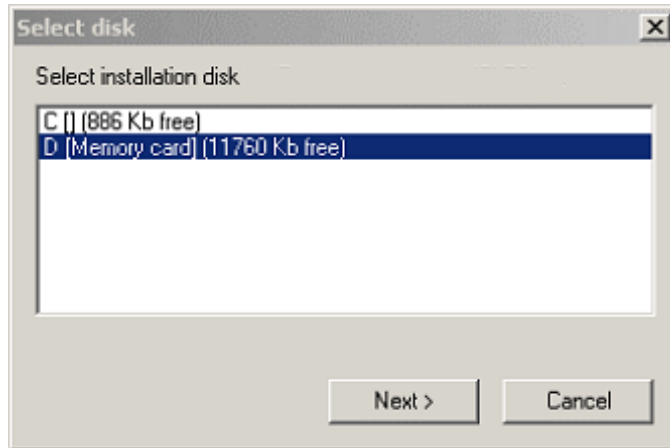
1. Check whether **PC Suite** application is running on your PC. If not – start it.
2. Connect your Nokia Communicator to PC using standard **data cable** (DLR-2L) and wait for PC Suite to establish connection with Communicator



3. Double-click your **SIS** file using left mouse button – this will launch PC Suite's Installer.



4. Select **destination disk** for the installation. Choose **C:** drive (internal memory) if you work with multiple memory cards to assure functionality of the localisation package even if the card is removed/changed or **D:** drive (memory card) if you work with single MMC card to conserve internal memory.



Installation is complete. Now you can enable the localisation via its icon located in **Control panel** and **register** it by entering **registration code**. If you don't have registration code, localisation package will be started in time-limited trial version.